



The following pictures are of the restoration



First Floor, West Side



First Floor, West Side



Newel Post



Second Floor Landing



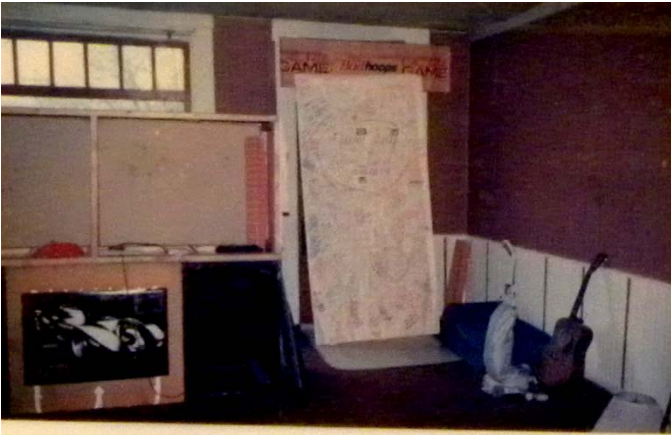
Main Floor Staircase



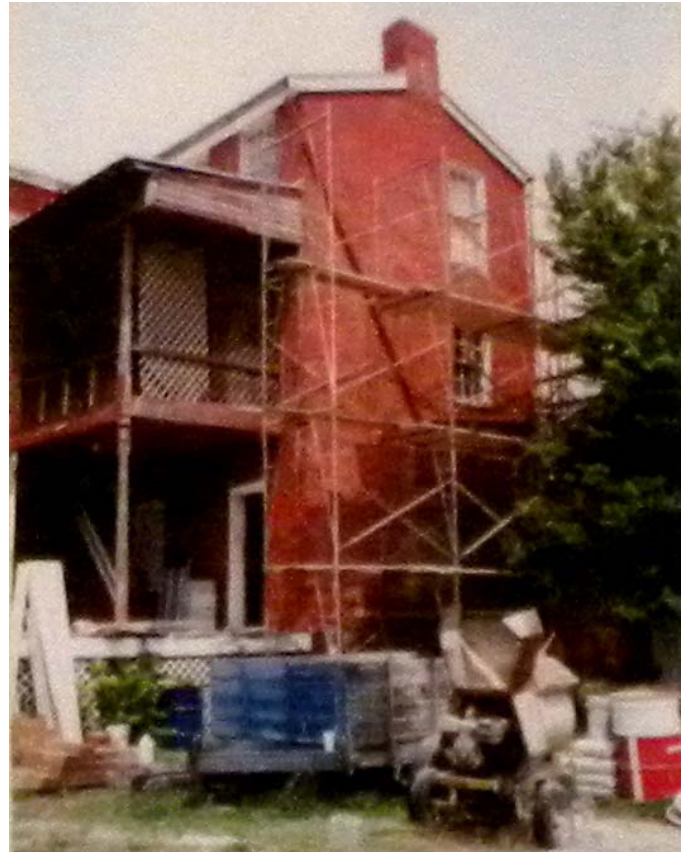
Kitchen, First Floor East Side



Ballroom



First Floor, East Side



Summer 2001 Masonry Work



Current pictures, this is just inside the entrance and to the left.



Front West Window



The floors to the balconies are missing



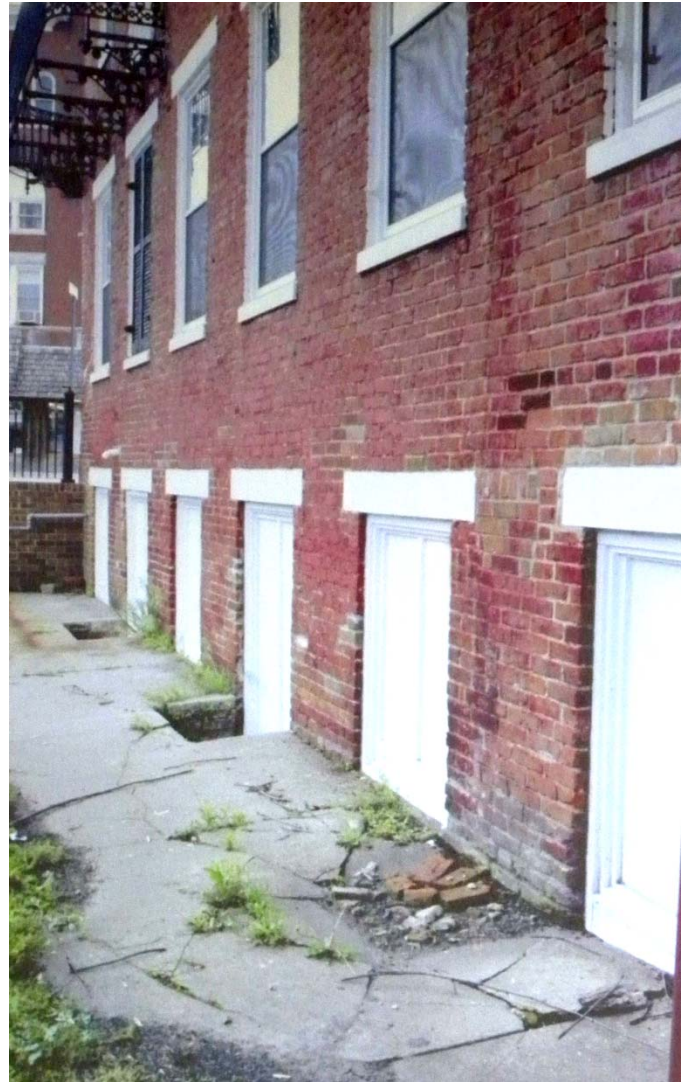
Front Window



From Second to Third Floor



Second Floor Back to Front



On the south side of the Vinton House, also directly on the canal level, canal boat workers could enter a kitchen for a warm meal.



These west side Vinton House doors originally opened directly onto the canal bank allowing goods, warehousing, exchange, and offices to conveniently serve the canal boat clientele

The Vinton House had a prime location for commerce because it was located at the intersection of the National Road and the northern terminus of the Whitewater Canal